



Tools for Threaded Test Probes

MagTorq Pro series

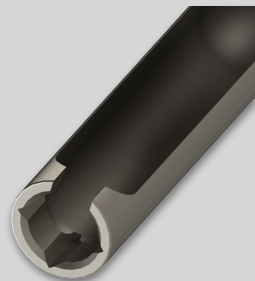
Creative and cost effective solutions for professional use

Edition 5.3

Square Closed (SC)



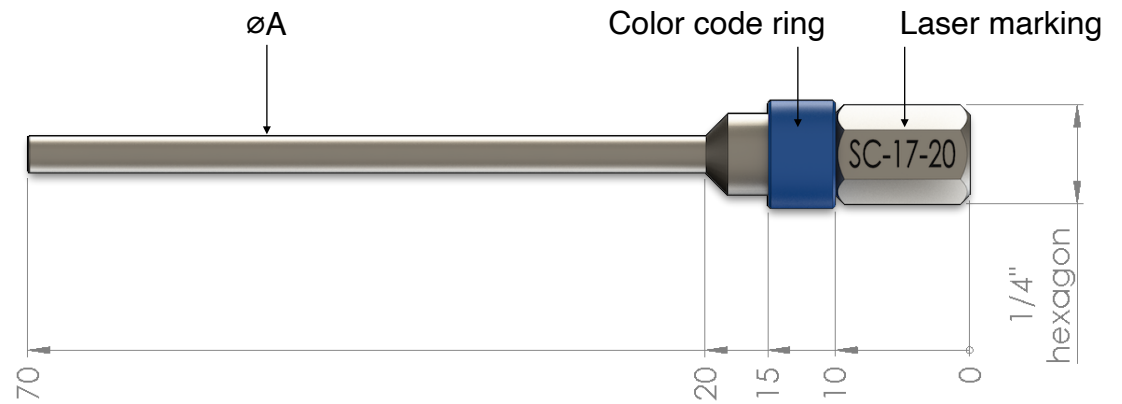
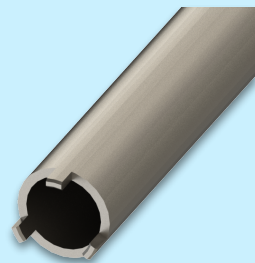
Square Open (SO)



2 Teeth (T2)

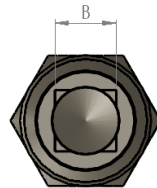


3 Teeth (T3)

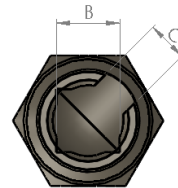


Order code	Tool Type	Wrench / Tooth size (in 0,1mm)	Max head dia (in 0,1mm)
SC-17-20	SC	1,7mm	2,0mm

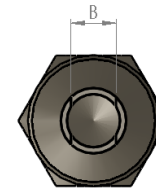
Type SC



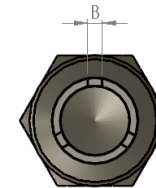
Type SO




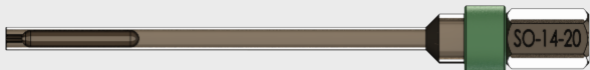

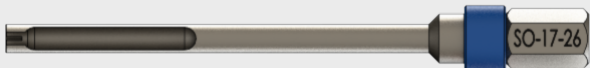

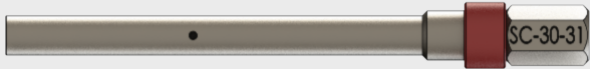

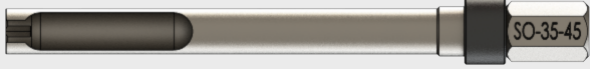


Type T2



Type T3

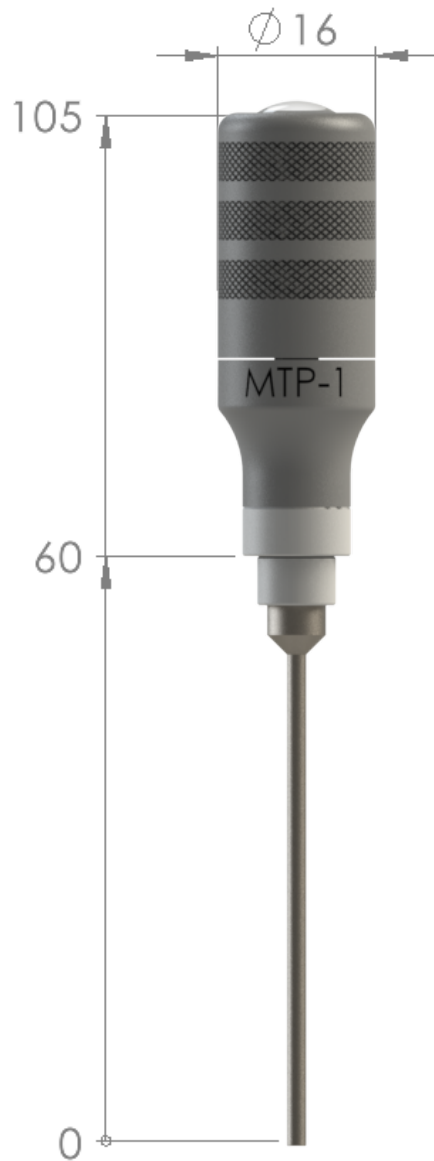






Order Nr. (old version)	SW size	Max head size	A	B	C	Torque range (min-max)	BIT
SC-10-11 (IGL-TL-10)	1	1,1	2	1,1	-	0,8-1 cNm	
SO-10-15 (IGL-TL-9)	1	1,5	2	1,1	0,8	0,8-1 cNm	
SC-14-15 (IGL-TL-8)	1,4	1,5	2,4	1,5	-	2-3 cNm	
SO-14-20 (IGL-TL-7)	1,4	2	2,8	1,5	1	2-3 cNm	
SC-17-20 (IGL-TL-1B)	1,7	2	2,7	1,8	-	3-5 cNm	
SO-17-26 (IGL-TL-2)	1,7	2,6	3,5	1,8	1,2	3-5 cNm	
SC-26-30 (IGL-TL-14)	2,6	3	4	3	-	5-10 cNm	
SC-30-31 (IGL-TL-6)	3	3,1	4,8	3,1	-	5-10 cNm	
SO-30-40 (IGL-TL-5)	3	4	5	3,1	2	5-10 cNm	
SO-35-45 (IGL-TL-19)	3,5	4,5	5,5	3,6	2,6	10-20cNm	

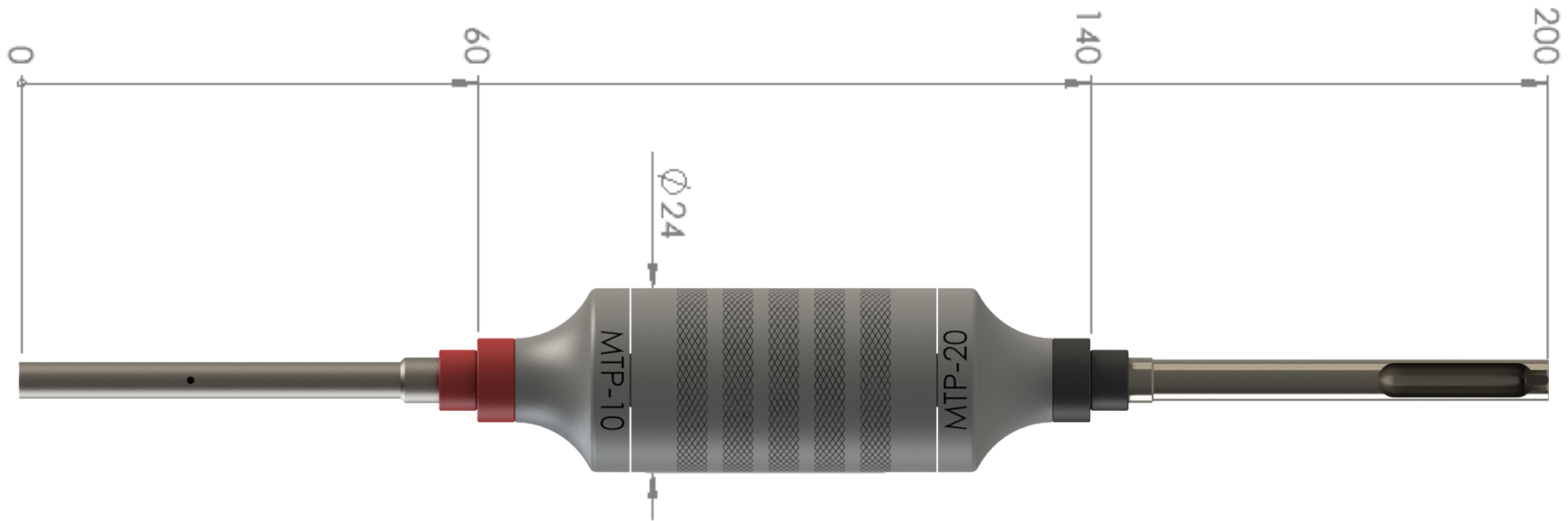
Order Nr. (old version)	SW size	Max head size	A	B	C	Torque range	BIT
T2-22-24 (IGL-TL-4)	2,2	2,4	3,2	2,2	-	5-10 cNm	
T2-27-26 (IGL-TL-12)	2,7	2,6	4	2,7	-	5-10 cNm	
T3-03-11 (IGL-TL-17)	-	1,1	1,85	0,3	-	2-3 cNm	
T3-05-16 (IGL-TL-15)	-	1,6	2,4	0,5	-	3-5 cNm	
T3-05-23 (IGL-TL-16)	-	2,3	3,1	0,5	-	3-5 cNm	
T3-07-34 (IGL-TL-18)	-	3,4	4,2	0,7	-	5-10 cNm	

Compatibility list	Fixtest	Ingun	Feinmetall	PTR
SC-10-11 (IGL-TL-10)	215, 66	GKS-075M	F175, F730	1010/G, 1012/G
SO-10-15 (IGL-TL-9)				
SC-14-15 (IGL-TL-8)	70	GKS-899M T-899M	F731	1015/G, 3030/GW3
SO-14-20 (IGL-TL-7)				
SC-17-20 (IGL-TL-1B)	71, 73, 352	GKS-112M, 204M, 427M, 746M, 761M HSS-118M, 827M SKS-215M VF100	F722, F732, F873, F875, F375, F756, F757, VF100	1021/G, 1021/GV, 1024/G, 1028/G, 3020/2G, 3020/2GW5, 3023/2GS, 3024/2G, 5203, 3028.01
SO-17-26 (IGL-TL-2)				
SC-26-30 (IGL-TL-14)	265E	-	-	-
SC-30-31 (IGL-TL-6)	72, 68, 803, 463, 351, 435	GKS-098M, 103M, 113M, 313M, 803M, 503M, 913M HSS-120M, 520M / SKS: 435M VF5	F723, F733, F737, F755	1060/G, 1061/G, 5110/G, 3010/2G, 3010/2G5, 3010/2GW, 3010/10G, 3011/2GS, 3011/2FGS, 5104, 3014/2G, 4004/G, 5104, 5110/G
SO-30-40 (IGL-TL-5)				
SO-35-45 (IGL-TL-19)	353	HSS-150M, GKS-854M, HSS-552M	F735, F735C	1075/G
T2-22-24 (IGL-TL-4)	265	VF3	VF3, V03	-
T2-27-26 (IGL-TL-12)	-	SKS-465 MF/SF / PKS-350M, 355M, VF4	F881, F883, F885, F886, F385, F760, F761, VF4, V04	3012/2GS, 3212/2GS
T3-03-11 (IGL-TL-17)	70T	-	F731SP	-
T3-05-16 (IGL-TL-15)	71T	T-912M	F732SP	1021/GT-D17xx, F17xx (Plate- $\varnothing \geq 2.1$) 1060/GT-D17xx, F17xx (Plate- $\varnothing \geq 2.1$)
T3-05-23 (IGL-TL-16)	71T	T-912M	F732SP1	1021/GT-D17xx, F17xx (Plate- $\varnothing \geq 2.8$) 1060/GT-D17xx, F17xx (Plate- $\varnothing \geq 2.8$)
T3-07-34 (IGL-TL-18)	72T	T-888M	F733SP	1060/GT-D17xx, F17xx (Plate- $\varnothing \geq 4.0$)

Cross reference list	Ingun	Feinmetall	PTR
SC-10-11 (IGL-TL-10)	BIT-GKS-075 M-B	BIT730	WFSB 1010/G-1.5-1.0 / WFSB 1012/G-1.5-1.0
SO-10-15 (IGL-TL-9)	BIT-GKS-075 M	BIT730S1	WFSB 1010/G-2.3-1.5-Z / WFSB 1012/G-1.9-1.5-Z
SC-14-15 (IGL-TL-8)	BIT-GKS-899 M-B	BIT731S1	WFSB 1015/G-2.54-1.5
SO-14-20 (IGL-TL-7)	BIT-GKS-899 M	BIT731	WFSB 1015/G-2.54-1.8
SC-17-20 (IGL-TL-1B)	BIT-GKS-112 M-B / BIT-GKS-212 M-B	BIT732 BITVF100	WFSB 1021/G-2.54-2.0
SO-17-26 (IGL-TL-2)	BIT-GKS-112 M BIT-VF100 M	BIT732S1 BITVF100S1	WFSB 1021/G-C2S-3.0-2.5-Z
SC-26-30 (IGL-TL-14)	-	-	-
SC-30-31 (IGL-TL-6)	BIT-GKS-113 M-B	BIT733S1	WFSB 1060/G-4.0-3.0
SO-30-40 (IGL-TL-5)	BIT-GKS-113 M	BIT733	WFSB 1060/G-5.0-4.0-Z
SO-35-45 (IGL-TL-19)	BIT-HSS-150 M	BIT735(T)	WFSB 1070/G-5.0-4.0
T2-22-24 (IGL-TL-4)	BIT-VF3 M-B	BITVF3S2	-
T2-27-26 (IGL-TL-12)	BIT-SKS-465 M-B / BIT-VF4 M-B	BIT885	WFSB 3012-4.0-2.6
T3-03-11 (IGL-TL-17)	-	BIT731SP	-
T3-05-16 (IGL-TL-15)	BIT-T-912 M	BIT732SP	WFSB 1021/GT-1
T3-05-23 (IGL-TL-16)	BIT-T-888 M3	BIT732SP1	WFSB 1021/GT-2
T3-07-34 (IGL-TL-18)	BIT-T-888 M	BIT733SP	WFSB 1060/GT



Order Nr.	Torque range	Size	Preset torque handle
MTP-B	-	Ø16	
MTP-1	0,8-1 cNm	Ø16	
MTP-3	2-3 cNm	Ø16	
MTP-5	3-5 cNm	Ø16	

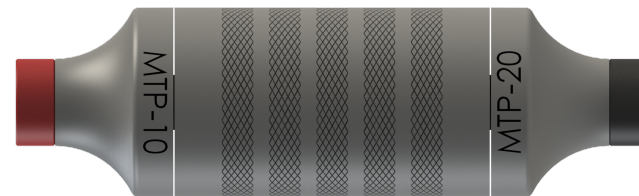


Order Nr.	Torque range	Size	Preset torque handle
-----------	--------------	------	----------------------

MTP-10-20

5-10 cNm
10-20 cNm

Ø24

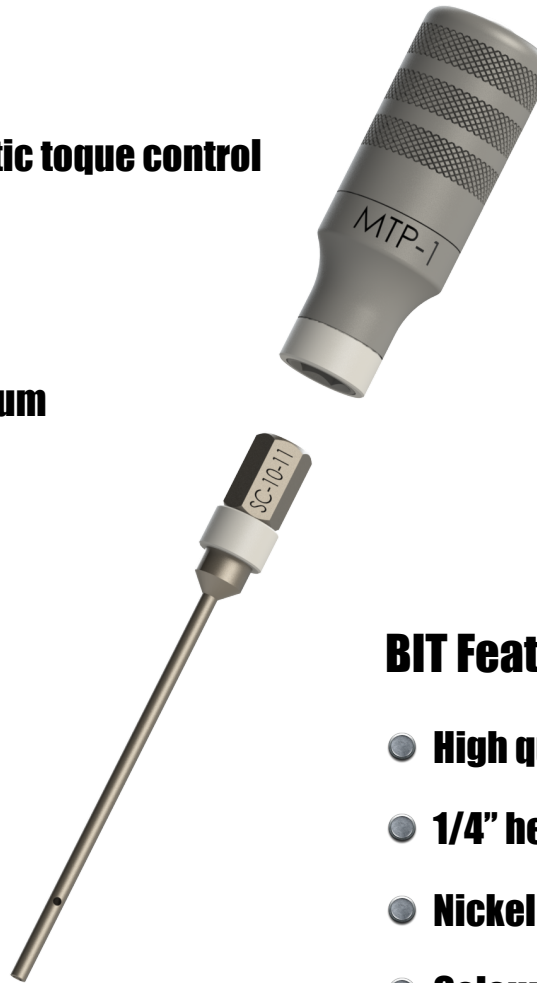


MagTorq Pro

Precision magnet torque handle

Handle features:

- **Unique wear free slip over magnetic torque control**
- **1/4" hexagonal magnet adapter**
- **Dual direction torque control**
- **High strength EN AW 7075 aluminium**
- **Hard anodized plating**
- **Colour coded handle**



BIT Features:

- **High quality automat steel (RoHS Compliant)**
- **1/4" hexagonal shank**
- **Nickel plating**
- **Colour coded BIT**



Contact us:

Igla Trade Kft.
Ady Endre u. 48
H-1174 Budapest
HUNGARY
info@iglatrade.com

Igla Trade Sp. z o.o.
ul. Pilotów 61/3
31-462 Kraków
POLAND
infopl@iglatrade.com

S.C. Igla Trade S.R.L.
Str Cuza Voda nr 85, cam 204
410097 Oradea
ROMANIA
inforo@iglatrade.com

... visit us at www.iglatrade.com